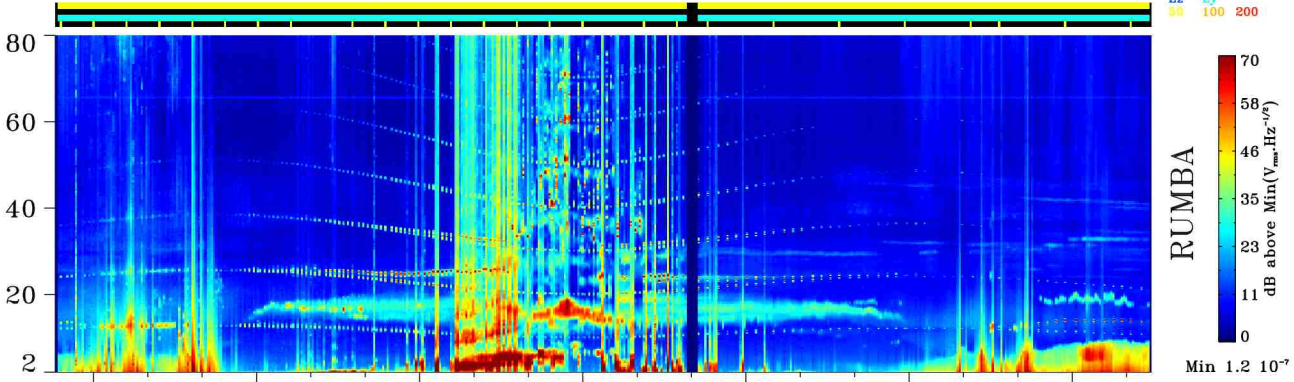


CLUSTER-WHISPER ELECTRIC FIELD SPECTROGRAM JAN 22, 2002 Day 22 Orbit 242

Method: Average

presence
HBR
Ez Ey
50 100 200

C1



UT
Sep(Km)

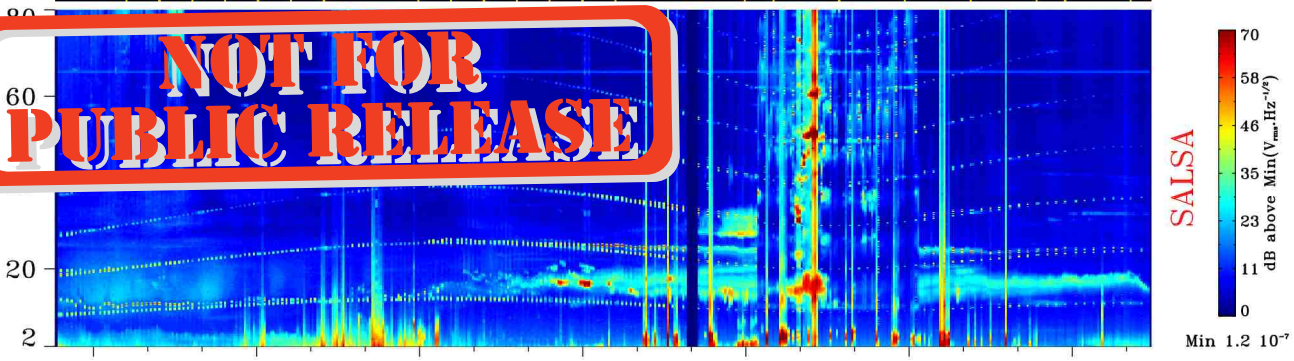
16:30	17:00	17:30	18:00	18:30	19:00	19:30
4844	5037	5148	5149	5038	4848	4618

RUMBA
70
58
46
35
23
11
0
dB above Min($V_{min} \cdot Hz^{-1/2}$)
Min $1.2 \cdot 10^{-7}$

presence
HBR
Ez Ey
50 100 200

C2

NOT FOR
PUBLIC RELEASE



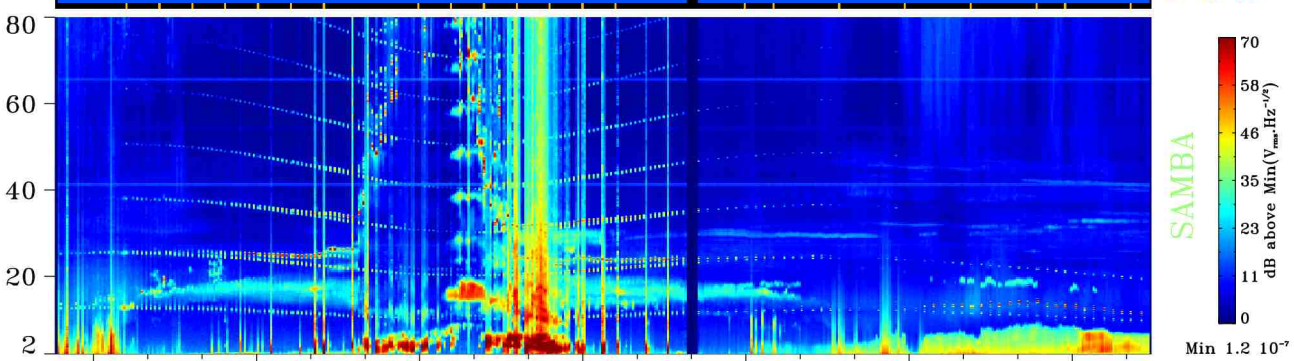
UT
Sep(Km)

16:30	17:00	17:30	18:00	18:30	19:00	19:30
16437	17199	17772	18034	17922	17460	16756

SALSA
70
58
46
35
23
11
0
dB above Min($V_{min} \cdot Hz^{-1/2}$)
Min $1.2 \cdot 10^{-7}$

presence
HBR
Ez Ey
50 100 200

C3



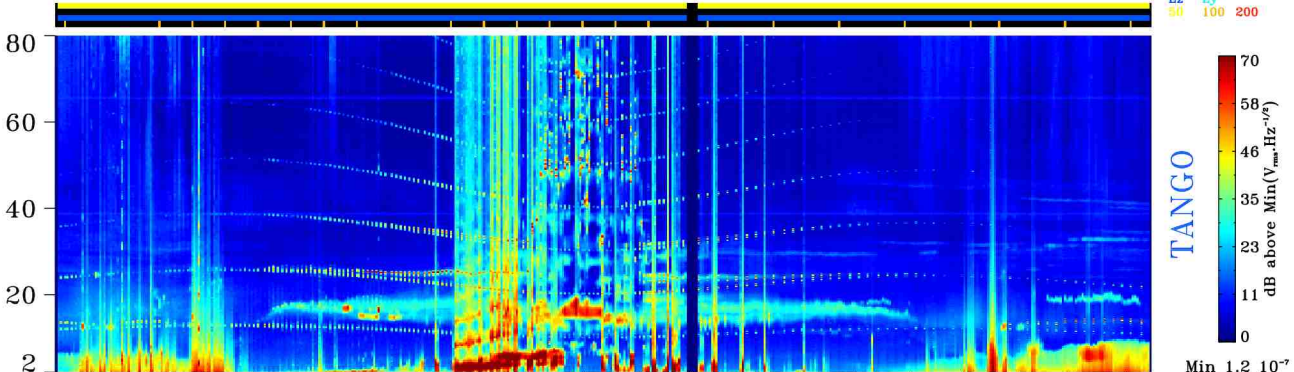
UT

16:30	17:00	17:30	18:00	18:30	19:00	19:30
-------	-------	-------	-------	-------	-------	-------

SAMBA
70
58
46
35
23
11
0
dB above Min($V_{min} \cdot Hz^{-1/2}$)
Min $1.2 \cdot 10^{-7}$

presence
HBR
Ez Ey
50 100 200

C4



UT
Dist(Re)
Lat(deg)
LT(Gse)
Sep(Km)

16:30	17:00	17:30	18:00	18:30	19:00	19:30
4.71	4.46	4.35	4.40	4.61	4.95	5.37
-34.3	-19.4	-2.9	13.8	29.3	42.7	53.5
3.6	3.1	2.7	2.2	1.7	1.2	0.5
5516	5723	5836	5822	5682	5450	5174

TANGO
70
58
46
35
23
11
0
dB above Min($V_{min} \cdot Hz^{-1/2}$)
Min $1.2 \cdot 10^{-7}$