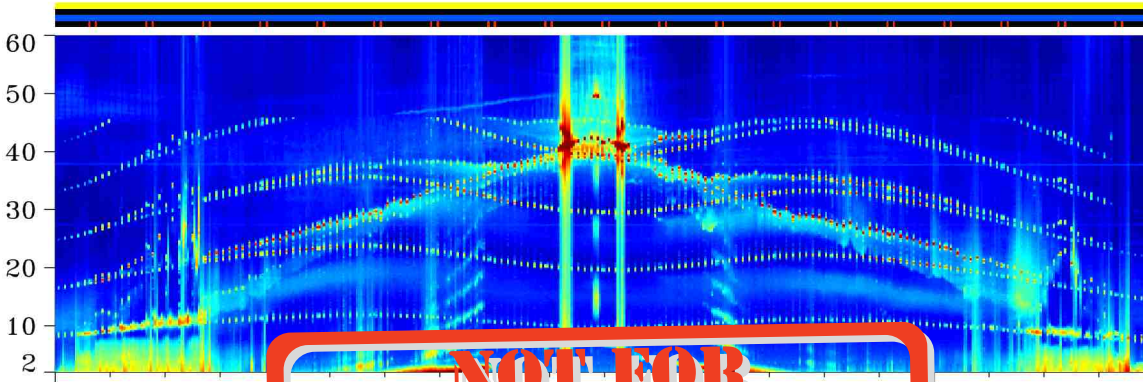


CLUSTER-WHISPER ELECTRIC FIELD SPECTROGRAM SEP 16, 2001 Day 259 Orbit 188

Method: Average

presence
HBR
Ez Ey
50 100 200

C1



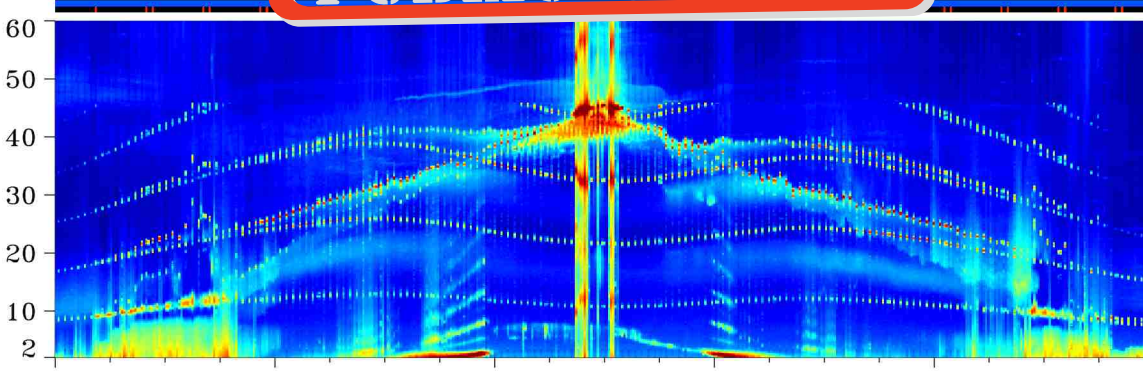
RUMBA
dB above Min($V_{min} \cdot \text{Hz}^{-1/2}$)
70
58
46
35
23
11
0
Min $1.3 \cdot 10^{-7}$

UT
Sep(Km)

04:00 05:00 06:00 07:00 08:00
10615 11064 11675 12029 11203

NOT FOR PUBLIC RELEASE

C2

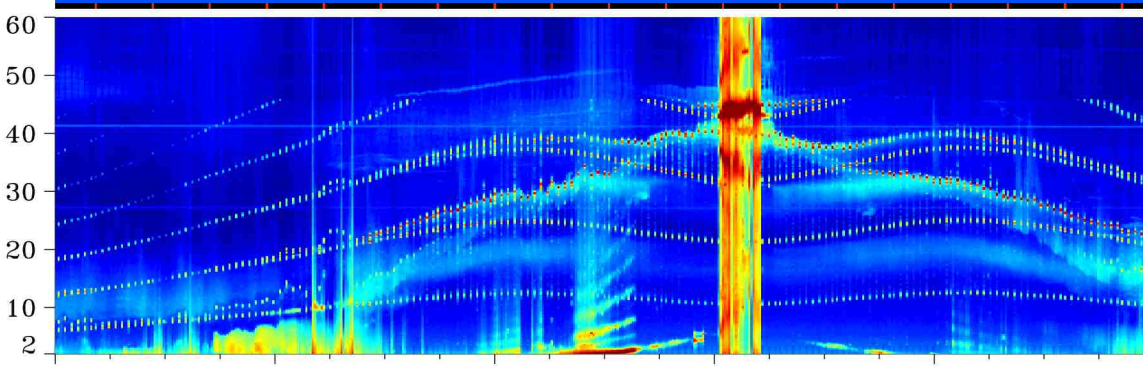


SALSALSA
dB above Min($V_{min} \cdot \text{Hz}^{-1/2}$)
70
58
46
35
23
11
0
Min $1.3 \cdot 10^{-7}$

UT
Sep(Km)

04:00 05:00 06:00 07:00 08:00
9073 10447 11675 12029 11203

C3

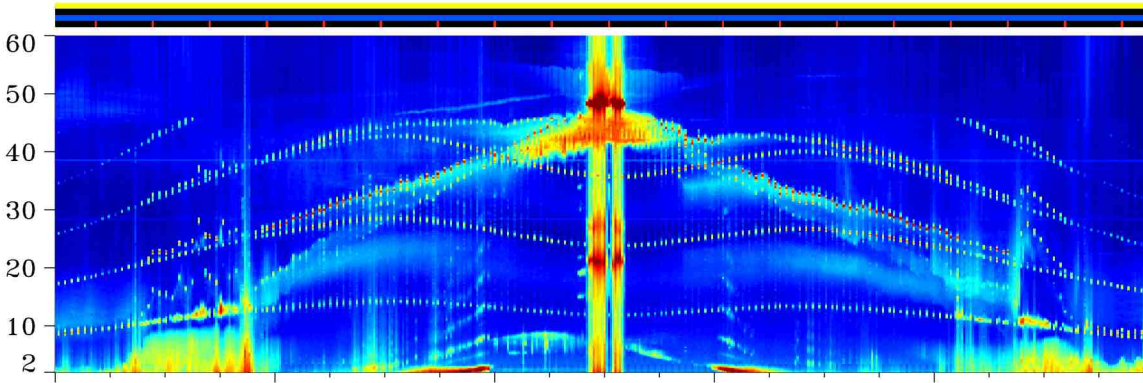


SAMBA
dB above Min($V_{min} \cdot \text{Hz}^{-1/2}$)
70
58
46
35
23
11
0
Min $1.3 \cdot 10^{-7}$

UT

04:00 05:00 06:00 07:00 08:00

C4



TANGO
dB above Min($V_{min} \cdot \text{Hz}^{-1/2}$)
70
58
46
35
23
11
0
Min $1.3 \cdot 10^{-7}$

UT

04:00 05:00 06:00 07:00 08:00

Dist(Re)	6.61	5.56	4.70	4.28	4.51
Lat(deg)	-67.6	-58.6	-37.3	-5.8	27.4
LT(Gse)	16.3	13.9	12.3	11.3	10.3
Sep(Km)	7654	9268	10973	11969	11711