

**Continuum Workshop
Orléans 6-7 April 2004**

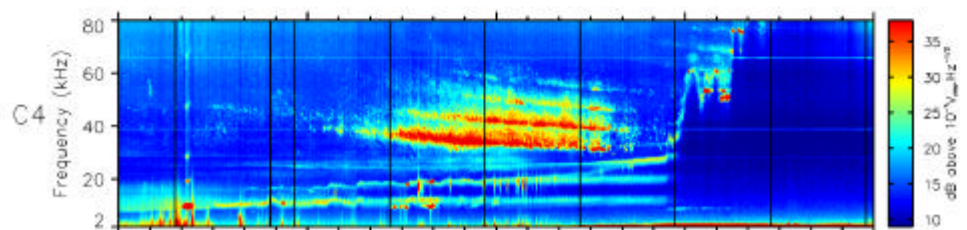
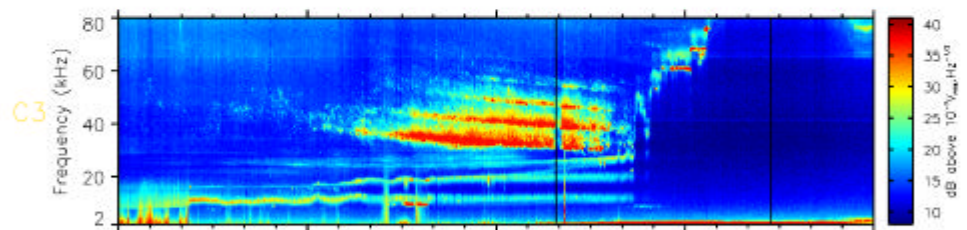
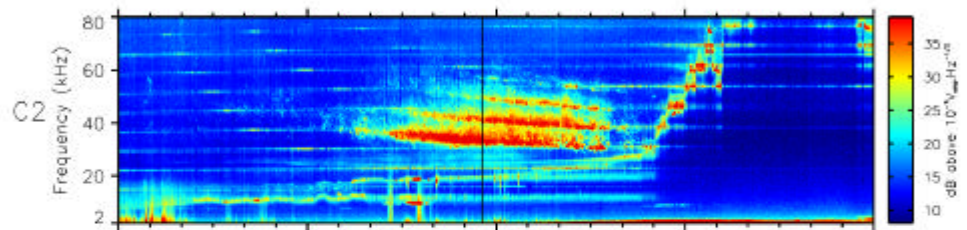
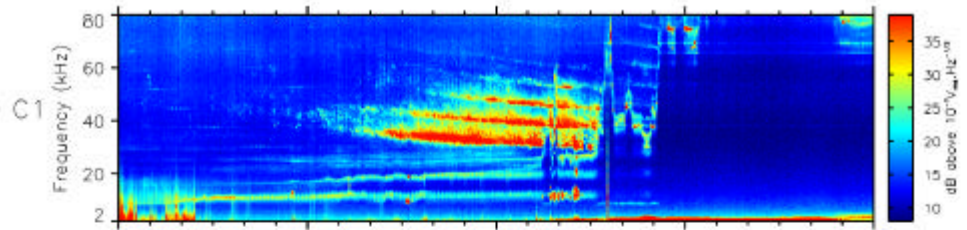
30/12/2003 Event

P. Décréau

CLUSTER-WHISPER Spectrogram / DEC 30, 2003 (Day 364)

LPCE/CWRS - Jan 06, 2004

Method: AvgNot

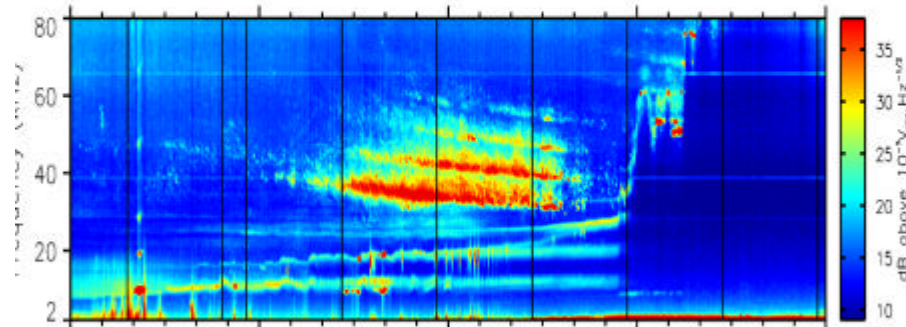
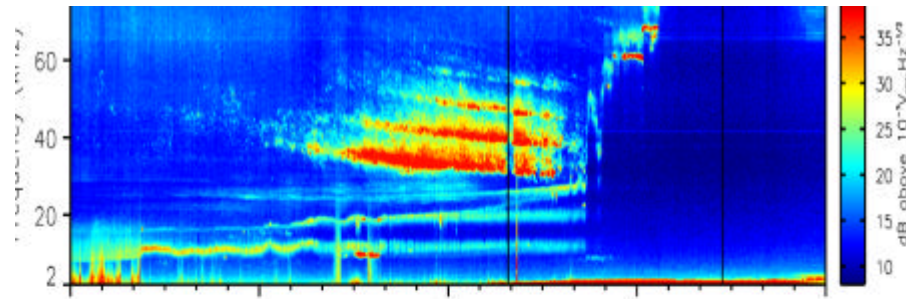


UT	08:10:00	08:23:45	08:37:30	08:51:15	09:05:00
R(Re)	5.43	5.21	5.00	4.81	4.64
Lot_gse(deg)	-45.96	-41.26	-36.04	-30.27	-23.97
LT_gsm(h)	5.98	5.75	5.52	5.31	5.10
Lot_sml(deg)	-34.11	-28.56	-22.56	-16.09	-9.14
L	7.76	6.61	5.74	5.11	4.67

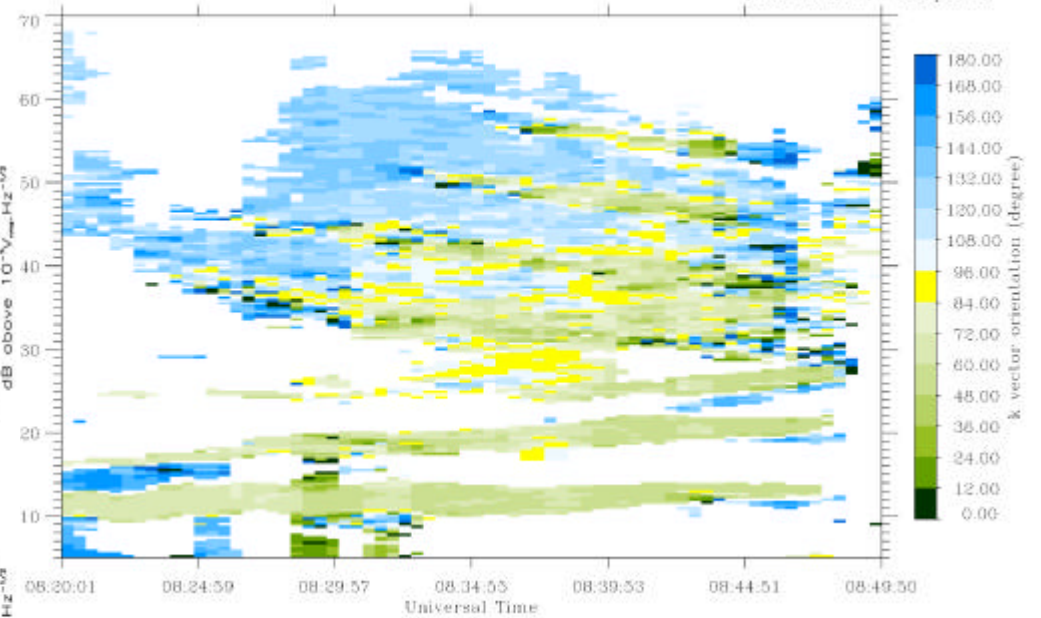
Directivity Filtering in XY GSE plane

WHISPER 3 30/12/2003

Heure de référence : 08:20
 Spin = 4.00345, Phase = 225.347
 Dursec = 90 sec, Dt = 25 sec
 Ssb = 2, Seuil = 3.e-7
 Taille de la fft : 256 points



	08:10:00	08:23:45	08:37:30	08:51:15	09:05:00
	5.43	5.21	5.00	4.81	4.64
j)	-45.96	-41.26	-36.04	-30.27	-23.97
i)	5.98	5.75	5.52	5.31	5.10
j)	-34.11	-28.56	-22.56	-16.09	-9.14
	7.76	6.61	5.74	5.11	4.67

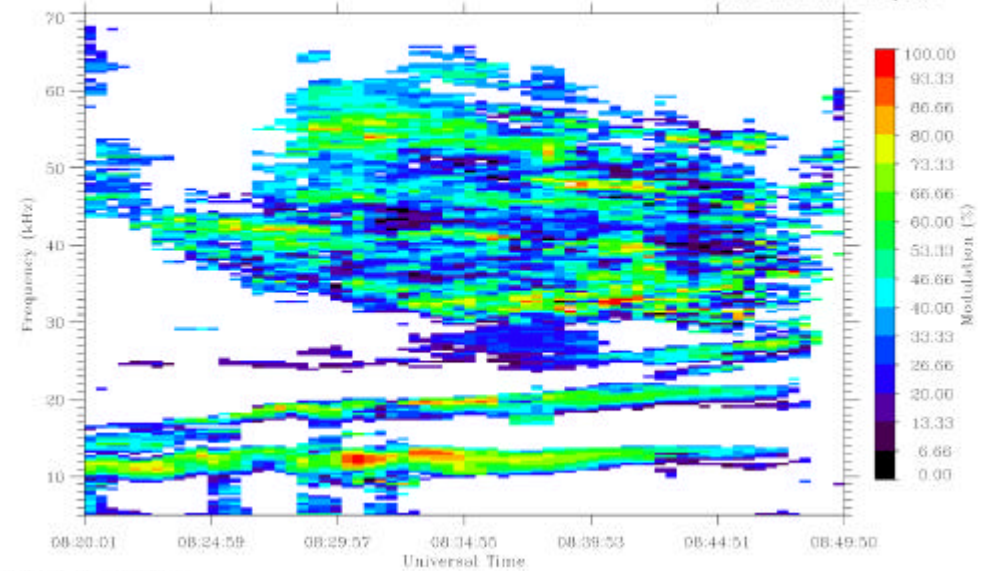


NRS 6 Jan 2004

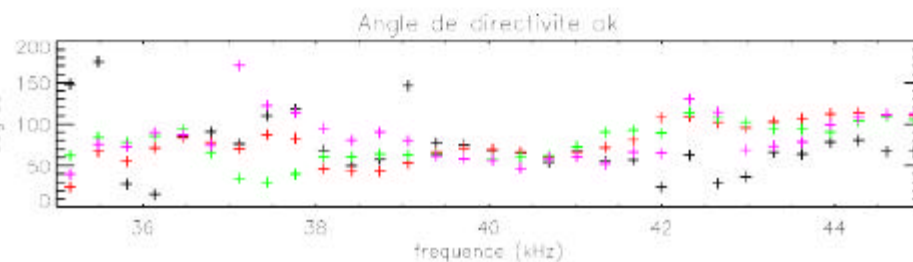
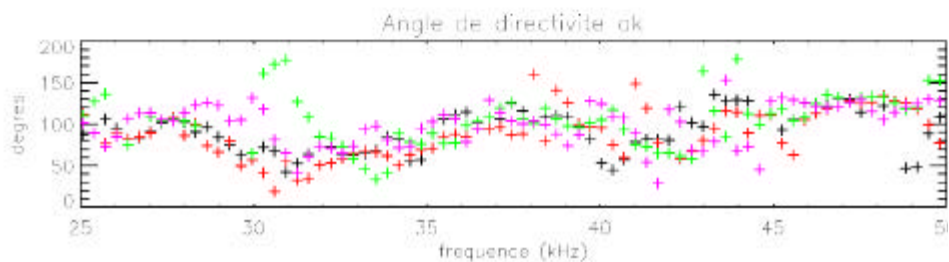
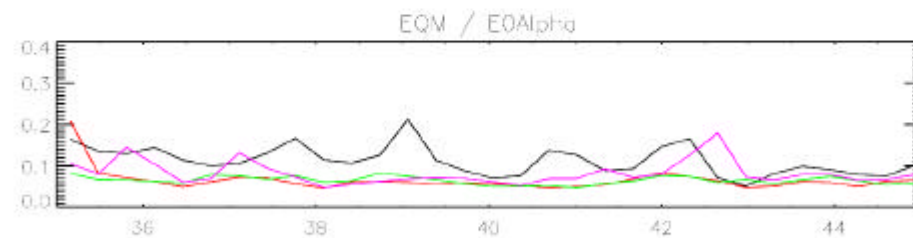
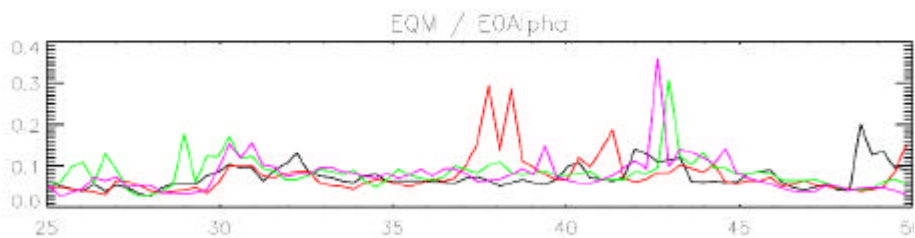
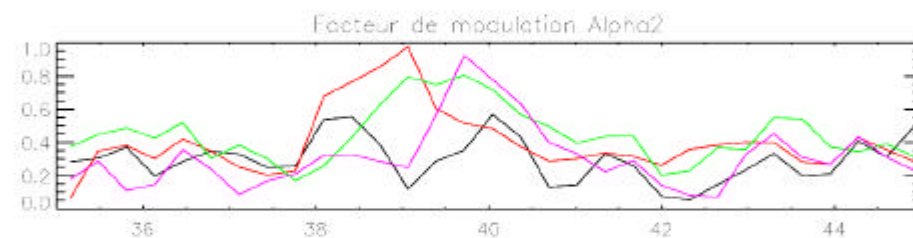
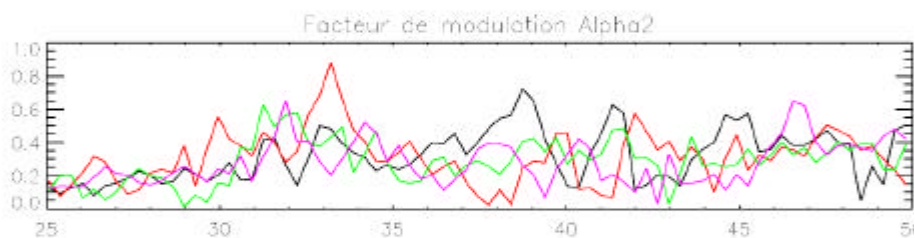
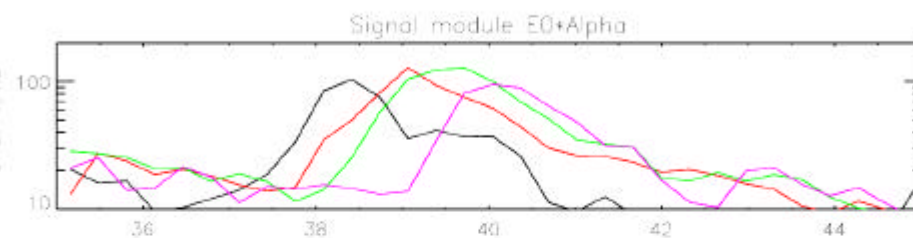
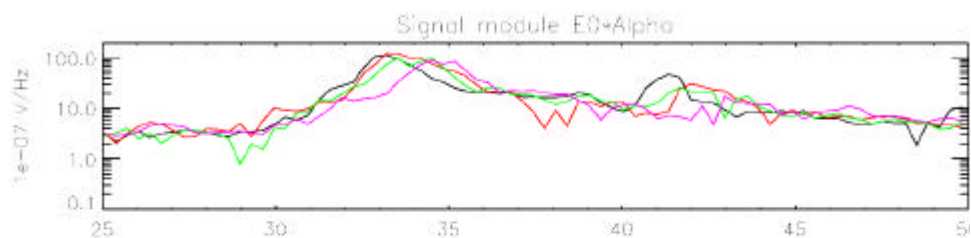
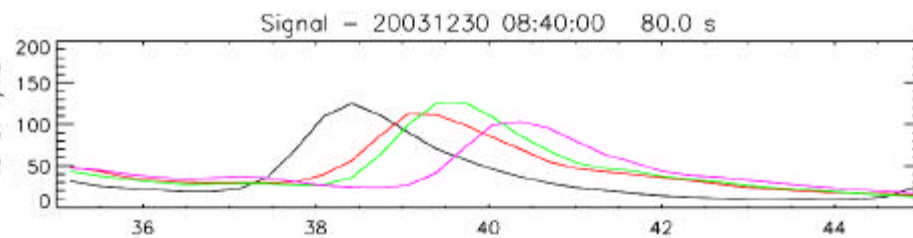
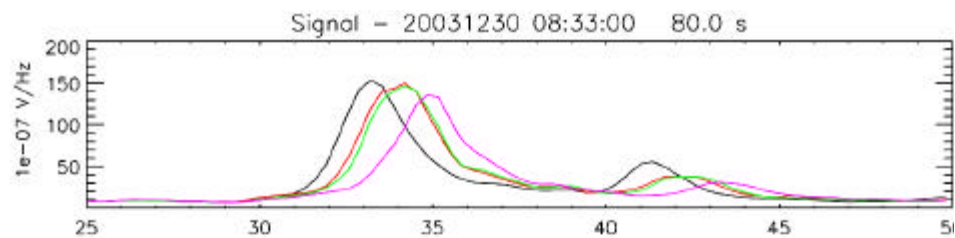
Modulation Filtering in XY GSE plane

WHISPER 3 30/12/2003

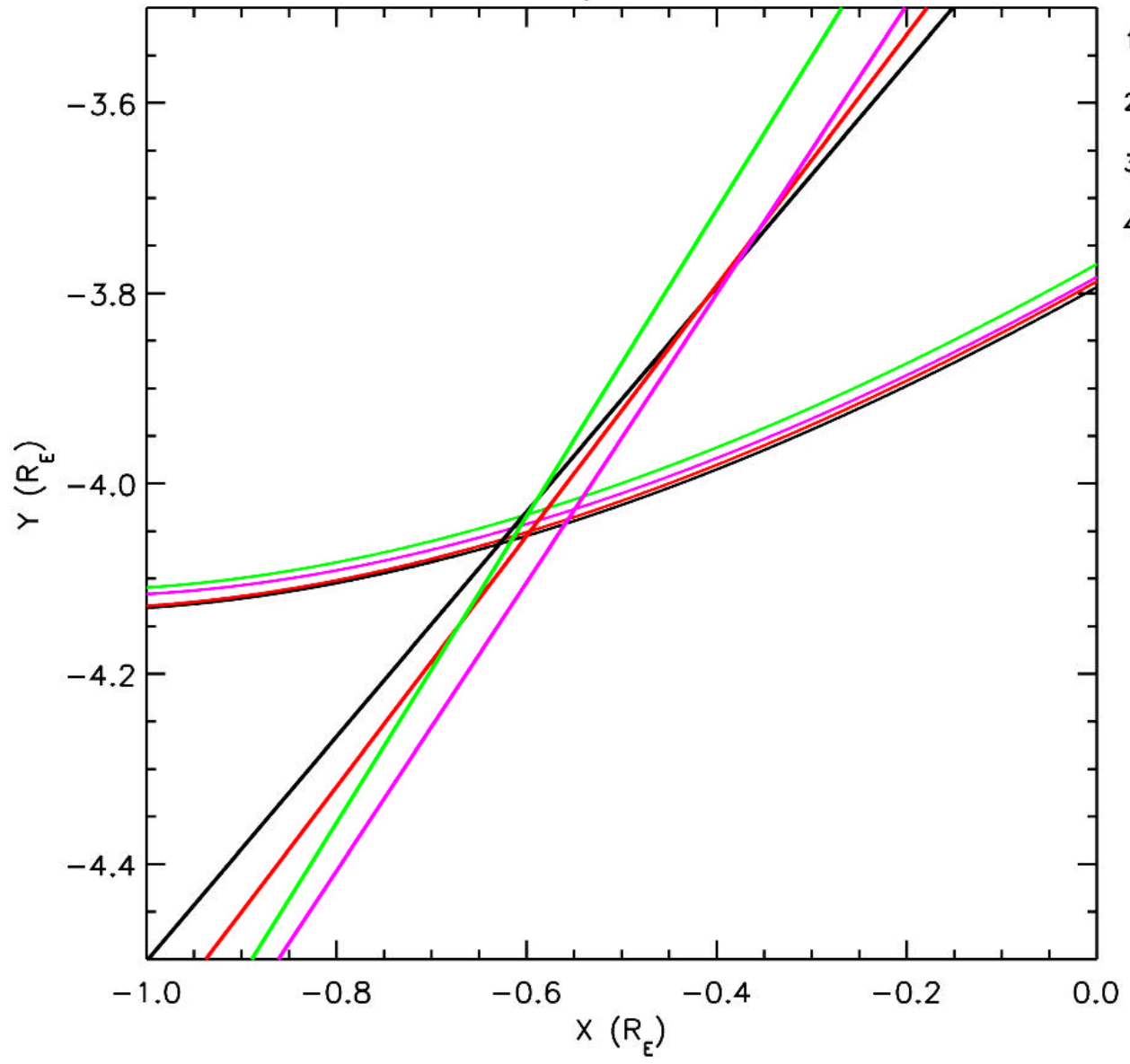
Heure de référence : 08:20
 Spin = 4.00345, Phase = 225.347
 Dursec = 90 sec, Dt = 25 sec
 Ssb = 2, Seuil = 3.e-7
 Taille de la fft : 256 points



LPCE/CNRS 6 Jan 2004



Visibilite - Frequences differentes



20031230
1: 08:40:40
38.411 kHz
2: 08:40:40
39.062 kHz
3: 08:40:40
39.713 kHz
4: 08:40:40
40.039 kHz

